

## N650H Excel full extension Easy-Fix

### Benefits for the industry

- Large range of standard depths from 250 to 550 mm
- Full extension for complete drawer access
- Very tolerant due to built-in flexibility
- New generation of SlowMotion<sup>FR</sup> damping with stop-close feature and FinalRelease feature to always guarantee drawer closure also under adverse conditions
- Easy-Fix rapid fixing for ease of assembly and integrated anti-lift feature
- Quick and easy front height adjustment without disassembly of the drawer
- Excellent load ability with 30kg dynamic standard capacity throughout the range

### Benefits for the consumer

- Smooth functioning thanks to new generation of wheel design
- Comfortable full extension for improved accessibility and ease of use
- Lasting quality thanks to optimised materials
- Hidden assembly for high quality perception of the whole cabinet
- Adaptive SlowMotion<sup>FR</sup> damping for noiseless closing
- High-end OneTouch handleless operation

Code	Description	Packing
54.N650.H7.25*.0000	Excel N650H for 250mm deep drawer (1 set)	Industrial
54.N650.H7.30*.0000	Excel N650H for 300mm deep drawer (1 set)	Industrial
54.N650.H7.35*.0000	Excel N650H for 350mm deep drawer (1 set)	Industrial
54.N650.H7.40*.0000	Excel N650H for 400mm deep drawer (1 set)	Industrial
54.N650.H7.45*.0000	Excel N650H for 450mm deep drawer (1 set)	Industrial
54.N650.H7.50*.0000	Excel N650H for 500mm deep drawer (1 set)	Industrial
54.N650.H7.55*.0000	Excel N650H for 550mm deep drawer (1 set)	Industrial

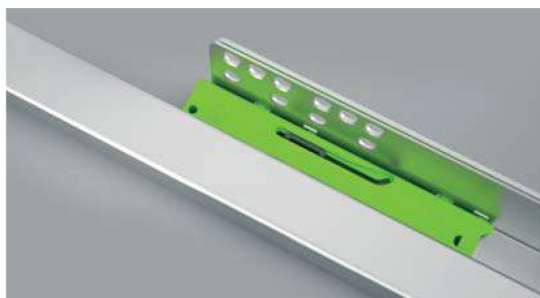
\* closing system: 0 = Self-Closing / Y = SlowMotion / P = OneTouch.

Industrial packing composed by:

- 1 box of 12 right profiles
- 1 box of 12 left profiles
- 1 box of 24 Easy-Fix devices.



### Easy-Fix



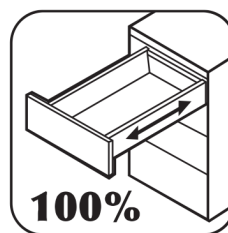
### OneTouch

Handleless cabinets are part of modern furniture design. FGV OneTouch technology is precise, reliable and works over a large range of drawer width.

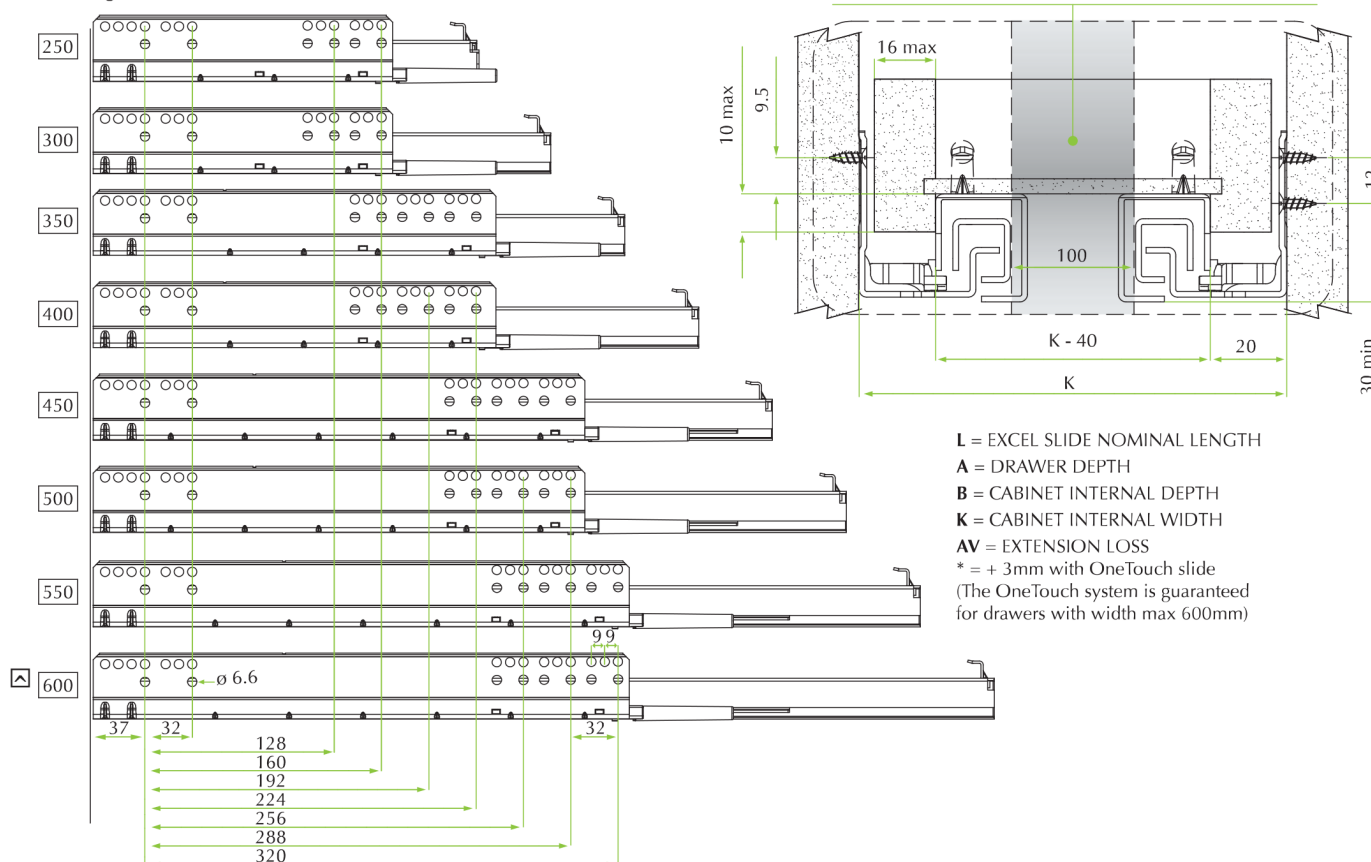


### SlowMotion<sup>FR</sup>

All new adaptive stop close damping device ensures a strong damping force and perfect closing of the drawer in every condition.

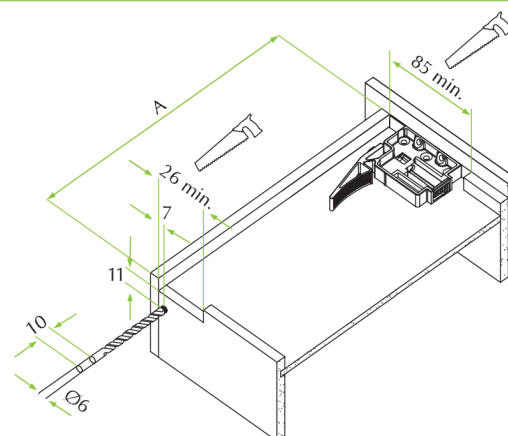
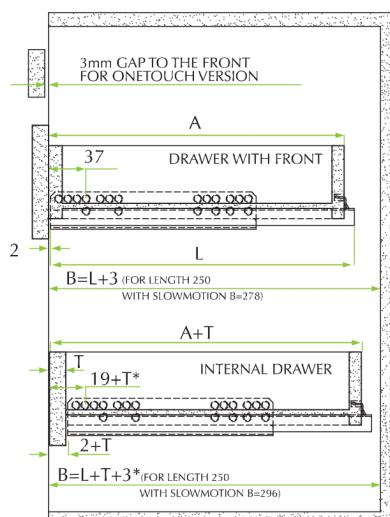


## Slides fixing dimensions



☐ = ON DEMAND

## Drawer mounting & dimensions



L	260*	310	360	410	460	510	560
A	250	300	350	400	450	500	550