

Test Report

No.: SDHL1804007651FT

Date: Apr.28, 2018

Page 1 of 3

FGV (GUANGZHOU) COMPANY LIMITED
 ROOM 2710, YANGCHENG INTERNATIONAL COMMERCIAL CENTER,
 EAST TOWER, NO.122 TIYUDONG ROAD, GUANGZHOU

The following sample(s) was / were submitted and identified on behalf of the client as:

Sample Description : H45 SOFT CLOSING BALL BEARING SLIDES, T=1.2X1.2X1.4MM
 5451450745X00
 Sample Receiving Date : Apr.19, 2018
 Test Performing Date : Apr.19, 2018 to Apr.28, 2018

Test Result Summary

Test(s) Requested	Result(s)
Slide durability test with reference to clause 6.3.8 of EN 15338:2007	PASS

Summary:

1. For further details, please refer to the following page(s).

Signed for and on behalf of
 Shunde Branch
 SGS-CSTC Co., Ltd.

Hary Nie
 Approved signatory



Unless otherwise agreed in writing, this document is issued by the Company subject to its General Conditions of Service printed overleaf, available on request or accessible at <http://www.sgs.com/en/Terms-and-Conditions.aspx> and, for electronic format documents, subject to Terms and Conditions for Electronic Documents at <http://www.sgs.com/en/Terms-and-Conditions/Terms-e-Documents.aspx>. Attention is drawn to the limitation of liability, indemnification and jurisdiction issues defined therein. Any holder of this document is advised that information contained hereon reflects the Company's findings at the time of its intervention only and within the limits of Client's instructions, if any. The Company's sole responsibility is to its Client and this document does not exonerate parties to a transaction from exercising all their rights and obligations under the transaction documents. This document cannot be reproduced except in full, without prior written approval of the Company. Any unauthorized alteration, forgery or falsification of the content or appearance of this document is unlawful and offenders may be prosecuted to the fullest extent of the law. Unless otherwise stated the results shown in this test report refer only to the sample(s) tested and such sample(s) are retained for 30 days only.

Attention: To check the authenticity of testing / inspection report & certificate, please contact us at telephone: (86-755) 8307 1443, or email: CN.Doccheck@sgs.com

SGS-CSTC Inspection & Testing Services Co., Ltd.
 Shunde Branch Harbin

1/F, 1st Building European Industrial Park, No.1 Shunde South Road, Wusha Section, Daliang Town, Shunde, Foshan, Guangdong, China 528333 t (86-757)22805888 f (86-757)22805858 www.sgs.com.cn
 中国·广东·佛山市顺德区大良街道办事处五沙顺和南路1号欧洲工业园一号厂房首层 邮编: 528333 t (86-757)22805888 f (86-757)22805858 e sgs.china@sgs.com

TESTS AND RESULTS

Test Conducted:

Slide durability test with reference to clause 6.3.8 of EN 15338:2007.

General Test Condition:

The following test program was conducted in a laboratory environment maintained at 15°C to 25°C and 50%±5 RH. The sample was individually tested after conditioning in the test environment for at least 24 hours prior to conducting the test.

The complete detailed procedures may be found in the referenced specification and are only summarized herein. Unless otherwise specified, the tests are carried out in the following order the same sample.

No. of Sample:

1 Pair (Sample 1). For more sample information and pictures, please refer to the following page.

Test and Requirements	Test Results
<p>6.3.8 Durability test Open and close the extension element gently and without supporting the front for 50,000 cycles specified by applicant. Open from the fully closed position to the point at which one-third of the inside length (depth) of the extension element, or at least 100 mm, remains inside the test frame. For extension elements, which are equipped with any sort of built-in stop in the open position, fully open the extension element without forcing the stop. If the extension element has a damper and/or a catch device, including a self opening or a self closing mechanism, this shall be allowed to operate at each cycle. Open and close the extension element via the force application point at a rate of 4 to 15 cycles per minute. The extension element shall fulfil its function and When the loading capacity is less than 40 kg, the opening and closing forces determined shall not exceed 50 N, When the loading capacity is not less than 40 kg, the opening and closing forces determined shall not exceed 12,5 % of the loading capacity.</p>	<p>PASS</p>

Remark:

1. The total load 35 kg and cyclic number 50,000 were specified by client;
2. The dimension of testing drawer is 530 mm(W) by 460 mm(L) by 120 mm(H);
3. For the sample information and pictures, please refer to the following page.



Unless otherwise agreed in writing, this document is issued by the Company subject to its General Conditions of Service printed overleaf, available on request or accessible at <http://www.sgs.com/en/Terms-and-Conditions.aspx> and, for electronic format documents, subject to Terms and Conditions for Electronic Documents at <http://www.sgs.com/en/Terms-and-Conditions/Terms-e-Documents.aspx>. Attention is drawn to the limitation of liability, indemnification and jurisdiction issues defined therein. Any holder of this document is advised that information contained hereon reflects the Company's findings at the time of its intervention only and within the limits of Client's instructions, if any. The Company's sole responsibility is to its Client and this document does not exonerate parties to a transaction from exercising all their rights and obligations under the transaction documents. This document cannot be reproduced except in full, without prior written approval of the Company. Any unauthorized alteration, forgery or falsification of the content or appearance of this document is unlawful and offenders may be prosecuted to the fullest extent of the law. Unless otherwise stated the results shown in this test report refer only to the sample(s) tested and such sample(s) are retained for 30 days only.

Attention: To check the authenticity of testing / inspection report & certificate, please contact us at telephone: (86-755) 8307 1443, or email: CN.Doccheck@sgs.com

SAMPLE INFORMATION AND PICTURES

Weight: 638.0 g / piece

Overall Dimensions: 452 mm L x 45.50 mm W x 12.60 mm H

Other Dimensions: /

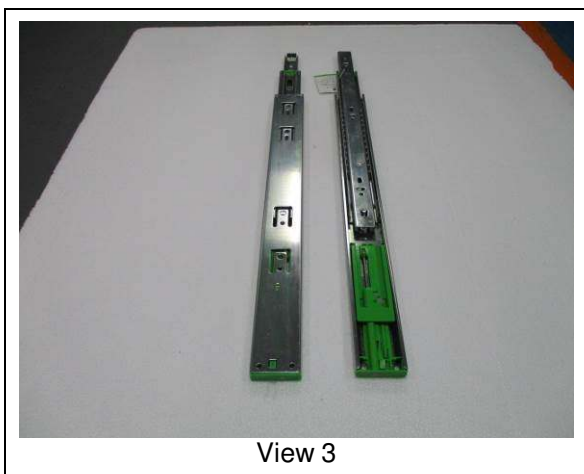
Sample as Received



View 1



View 2



View 3



View 4

End of Report



Test Report

No.: SDHL1804007648FT

Date: Apr.28, 2018

Page 1 of 3

FGV (GUANGZHOU) COMPANY LIMITED
 ROOM 2710, YANGCHENG INTERNATIONAL COMMERCIAL CENTER,
 EAST TOWER, NO.122 TIYUDONG ROAD, GUANGZHOU

The following sample(s) was / were submitted and identified on behalf of the client as:

Sample Description : H45 BALL BEARING SLIDES, T=1.2X1.2X1.4MM 5451450745000
 Sample Receiving Date : Apr.19, 2018
 Test Performing Date : Apr.19, 2018 to Apr.28, 2018

Test Result Summary

Test(s) Requested	Result(s)
Slide durability test with reference to clause 6.3.8 of EN 15338:2007	PASS

Summary:

1. For further details, please refer to the following page(s).

Signed for and on behalf of
 Shunde Branch
 SGS-CSTC Co., Ltd.

Hary Nie
 Approved signatory



Unless otherwise agreed in writing, this document is issued by the Company subject to its General Conditions of Service printed overleaf, available on request or accessible at <http://www.sgs.com/en/Terms-and-Conditions.aspx> and, for electronic format documents, subject to Terms and Conditions for Electronic Documents at <http://www.sgs.com/en/Terms-and-Conditions/Terms-e-Documents.aspx>. Attention is drawn to the limitation of liability, indemnification and jurisdiction issues defined therein. Any holder of this document is advised that information contained hereon reflects the Company's findings at the time of its intervention only and within the limits of Client's instructions, if any. The Company's sole responsibility is to its Client and this document does not exonerate parties to a transaction from exercising all their rights and obligations under the transaction documents. This document cannot be reproduced except in full, without prior written approval of the Company. Any unauthorized alteration, forgery or falsification of the content or appearance of this document is unlawful and offenders may be prosecuted to the fullest extent of the law. Unless otherwise stated the results shown in this test report refer only to the sample(s) tested and such sample(s) are retained for 30 days only.

Attention: To check the authenticity of testing / inspection report & certificate, please contact us at telephone: (86-755) 8307 1443, or email: CN.Doccheck@sgs.com

SGS-CSTC (Shunde) Technical Services Co., Ltd.
 Shunde Branch Harimies

1/F, 1st Building European Industrial Park, No.1 Shunhe South Road, Wusha Section, Daikang Town, Shunde, Foshan, Guangdong, China 528333 t (86-757)22805888 f (86-757)22805858 www.sgs.com.cn
 中国·广东·佛山市顺德区大良街道办事处五沙顺和南路1号欧洲工业园一号厂房首层 邮编: 528333 t (86-757)22805888 f (86-757)22805858 e sgs.china@sgs.com

TESTS AND RESULTS

Test Conducted:

Slide durability test with reference to clause 6.3.8 of EN 15338:2007.

General Test Condition:

The following test program was conducted in a laboratory environment maintained at 15°C to 25°C and 50%±5 RH. The sample was individually tested after conditioning in the test environment for at least 24 hours prior to conducting the test.

The complete detailed procedures may be found in the referenced specification and are only summarized herein. Unless otherwise specified, the tests are carried out in the following order the same sample.

No. of Sample:

1 Pair (Sample 1). For more sample information and pictures, please refer to the following page.

Test and Requirements	Test Results
<p>6.3.8 Durability test Open and close the extension element gently and without supporting the front for 50,000 cycles specified by applicant. Open from the fully closed position to the point at which one-third of the inside length (depth) of the extension element, or at least 100 mm, remains inside the test frame. For extension elements, which are equipped with any sort of built-in stop in the open position, fully open the extension element without forcing the stop. If the extension element has a damper and/or a catch device, including a self opening or a self closing mechanism, this shall be allowed to operate at each cycle. Open and close the extension element via the force application point at a rate of 4 to 15 cycles per minute. The extension element shall fulfil its function and When the loading capacity is less than 40 kg, the opening and closing forces determined shall not exceed 50 N, When the loading capacity is not less than 40 kg, the opening and closing forces determined shall not exceed 12,5 % of the loading capacity.</p>	<p>PASS</p>

Remark:

1. The total load 40 kg and cyclic number 50,000 were specified by client;
2. The dimension of testing drawer is 530 mm(W) by 460 mm(L) by 120 mm(H);
3. For the sample information and pictures, please refer to the following page.



Unless otherwise agreed in writing, this document is issued by the Company subject to its General Conditions of Service printed overleaf, available on request or accessible at <http://www.sgs.com/en/Terms-and-Conditions.aspx> and, for electronic format documents, subject to Terms and Conditions for Electronic Documents at <http://www.sgs.com/en/Terms-and-Conditions/Terms-e-Documents.aspx>. Attention is drawn to the limitation of liability, indemnification and jurisdiction issues defined therein. Any holder of this document is advised that information contained hereon reflects the Company's findings at the time of its intervention only and within the limits of Client's instructions, if any. The Company's sole responsibility is to its Client and this document does not exonerate parties to a transaction from exercising all their rights and obligations under the transaction documents. This document cannot be reproduced except in full, without prior written approval of the Company. Any unauthorized alteration, forgery or falsification of the content or appearance of this document is unlawful and offenders may be prosecuted to the fullest extent of the law. Unless otherwise stated the results shown in this test report refer only to the sample(s) tested and such sample(s) are retained for 30 days only.

Attention: To check the authenticity of testing / inspection report & certificate, please contact us at telephone: (86-755) 8307 1443, or email: CN.Doccheck@sgs.com

SAMPLE INFORMATION AND PICTURES

Weight: 664.0 g / piece

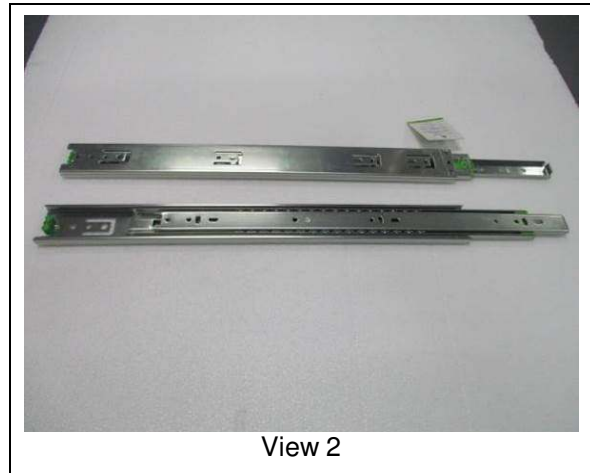
Overall Dimensions: 450 mm L x 44.80 mm W x 12.86 mm H

Other Dimensions: /

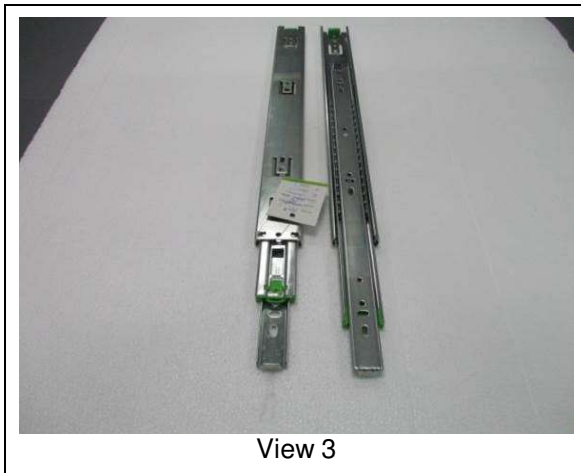
Sample as Received



View 1



View 2



View 3



View 4

End of Report



Unless otherwise agreed in writing, this document is issued by the Company subject to its General Conditions of Service printed overleaf, available on request or accessible at <http://www.sgs.com/en/Terms-and-Conditions.aspx> and, for electronic format documents, subject to Terms and Conditions for Electronic Documents at <http://www.sgs.com/en/Terms-and-Conditions/Terms-e-Documents.aspx>. Attention is drawn to the limitation of liability, indemnification and jurisdiction issues defined therein. Any holder of this document is advised that information contained hereon reflects the Company's findings at the time of its intervention only and within the limits of Client's instructions, if any. The Company's sole responsibility is to its Client and this document does not exonerate parties to a transaction from exercising all their rights and obligations under the transaction documents. This document cannot be reproduced except in full, without prior written approval of the Company. Any unauthorized alteration, forgery or falsification of the content or appearance of this document is unlawful and offenders may be prosecuted to the fullest extent of the law. Unless otherwise stated the results shown in this test report refer only to the sample(s) tested and such sample(s) are retained for 30 days only.

Attention: To check the authenticity of testing / inspection report & certificate, please contact us at telephone: (86-755) 8307 1443, or email: CN.Doccheck@sgs.com

1/F, Building European Industrial Park, No.1 Shunhe South Road, Wusha Section, Daikang Town, Shunde, Foshan, Guangdong, China 528333 t (86-757)22805888 f (86-757)22805858 www.sgs.com.cn
 中国·广东·佛山市顺德区大良街道办事处五沙顺和南路1号欧洲工业园一号厂房首层 邮编: 528333 t (86-757)22805888 f (86-757)22805858 e sgs.china@sgs.com



ASIA

SPT: BBS-D2

I.M.: A

Dis.: LUIGI
Drawer.:

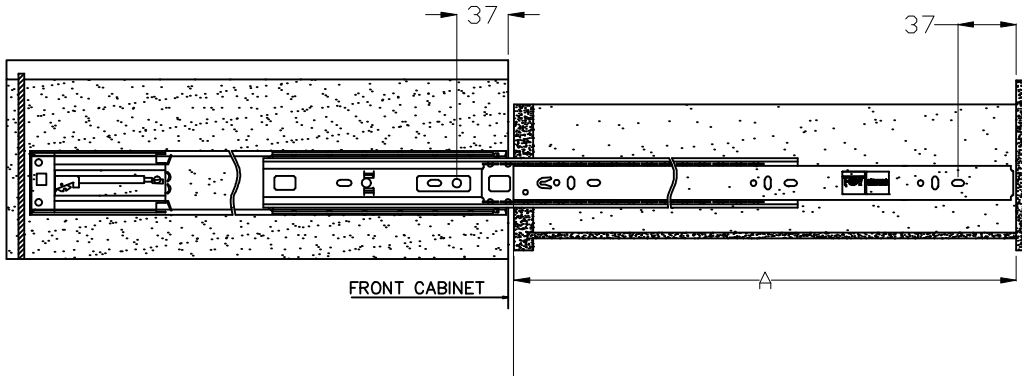
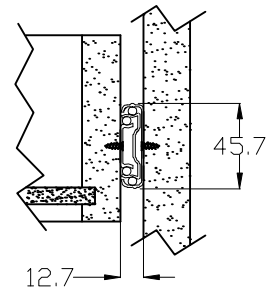
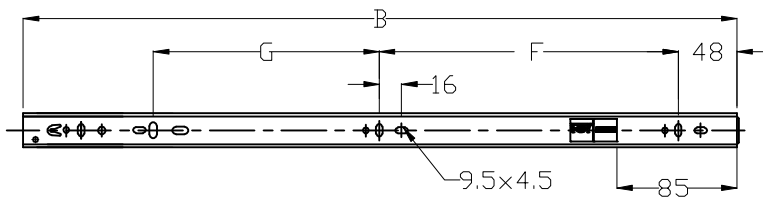
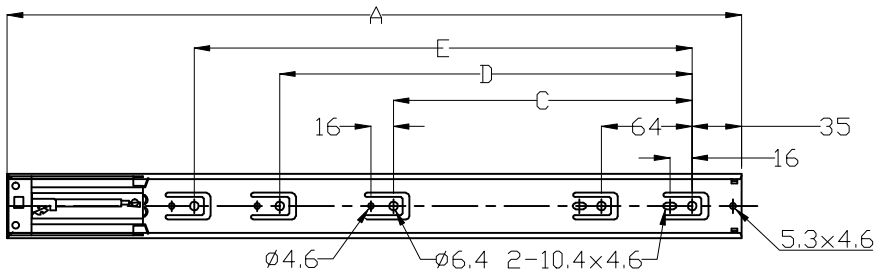
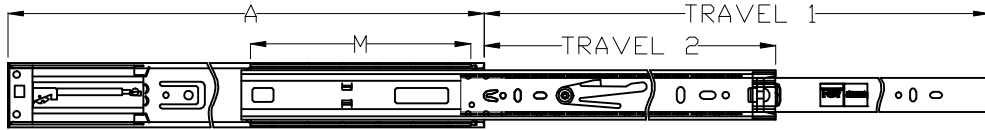
Data: 20181218
Date:

Visto: Check.:

Data: Date:

Denominazione: **Damped BB slides OPTION 2**
Part Name: **1.2/1.2/1.4mm, 1.0/1.0/1.2mm, 0.9/0.9/1.1mm**

Pag: PAGE



POS.	A	TRAVEL 1	TRAVEL 2	B	C	D	E	F	G	H	L	M
1	—	—	—	—	—	—	—	—	—	—	—	—
2	300	275	105	281	128	—	—	96	96	—	—	70
3	350	325	119	331	192	—	—	128	113	—	—	106
4	400	400	134	381	224	—	—	160	128	—	—	141
5	450	450	163	431	224	288	—	160	160	—	—	162
6	500	500	200	481	224	320	—	192	192	—	—	176
7	550	550	235	531	224	384	—	192	224	—	—	190
8	600	600	263	581	224	352	416	224	256	—	—	212
9	650	650	287	631	224	352	480	256	256	—	—	236
10	700	700	305	681	224	352	480	288	288	—	—	268



ASIA

SPT: BBS-S2

I.M.: A

Dis.: LUIGI
Drawer.:

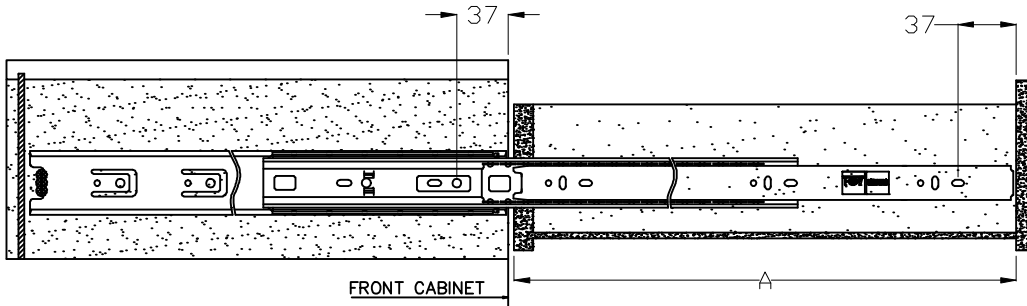
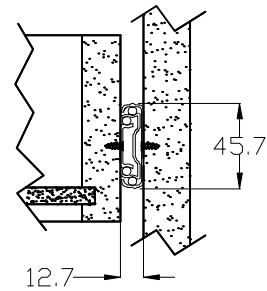
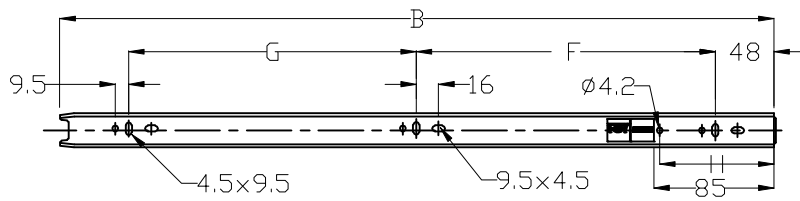
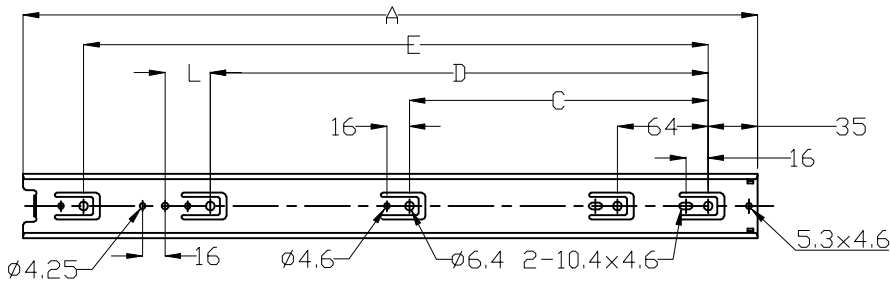
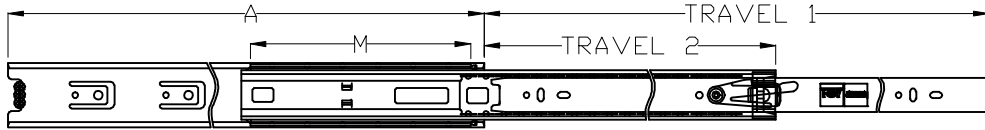
Data: 20181218
Date:

Visto: Check.:

Data: Date:

Denominazione: **Standard BB slides OPTION 2**
Part Name: **1.2/1.2/1.4mm, 1.0/1.0/1.2mm, 0.9/0.9/1.0mm**

Pag: PAGE



POS.	A	TRAVEL 1	TRAVEL 2	B	C	D	E	F	G	H	L	M
1	250	250	100	246	148	—	—	176	—	—	—	113
2	300	300	122	296	224	—	—	96	128	—	—	141
3	350	350	138	346	224	—	—	128	128	—	—	176
4	400	400	160	396	224	288	—	160	160	—	32 HOLE Ø6.4	203
5	450	450	201	446	224	352	—	160	192	81	32 HOLE Ø5	212
6	500	500	227	496	224	352	416	192	224	—	—	236
7	550	550	245	546	224	352	416	224	224	—	—	268
8	600	600	254	596	224	352	480	256	256	—	—	309
9	650	650	262	646	224	352	544	288	288	—	—	352
10	700	700	312	696	224	352	544	288	320	—	—	352